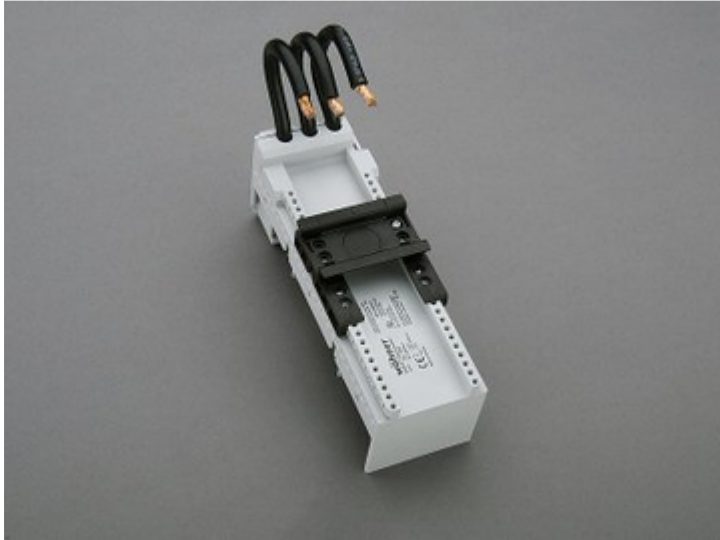


## adapter EEC 63 A, 1 mounting rail (32 591)



### Description

#### Article

Part No.: 32 591

EQUES® 30Compact

adapter EEC 63 A, 1 mounting rail

54 x 160

#### System

30Compact 3P

Product group 05

Subgroup 24

pack size 4

EAN 4021267325916

#### Advantages of the product

Conductor ends ultrasonically sealed.

Click mechanism when pushing onto the busbar.

Catalog page 2015 : 1/3

eCl@ss 6.1 27370304  
eCl@ss 7.1 27370304  
ETIM 4.0 EC001531  
ETIM 5.0 EC001531

## Approvals

### Standards

IEC 61439-1:2011

### Approvals

UL, Germanischer Lloyd



for UL feeder circuits >250V

Type number: EEC6063C-L

UL file: E123577, UL category (for USA): NMTR <http://www.ul.com>

UL file: E123577, UL category (for Canada): NMTR7 <http://www.ul.com>

CCC approval: no certification required

## Product data

### Electrical data

Rated current (IEC): 63 A

Rated voltage (IEC) AC: 690 V

Rated current (UL): 65 A

Rated voltage (UL) AC: 600 V

Power dissipation:

The power dissipation at a typical load of 80% of the rated current results to 4.4 W.

(The power dissipation for operation with rated current would be 6.9 W.)

rated isolation voltage  $U_i$  (AC): 800 V

Rated surge voltage  $U_{imp}$ : 6 kV

max. permitted voltage (IEC) AC: 800 V

max. permitted voltage (IEC) DC: 800 V

short-circuit withstandability: the motor starter gives the protection to the adapter

### **Mechanical data**

W x H x D: 54 x 160 x 63

Weight: 21.8 kg/100

Poles: 3-pole

### **Material properties**

Body: temperature stability 125°C,  
self-extinguishing in acc. to UL 94,  
creepage resistance CTI 200,  
halogen-free

DIN rail: temperature stability 125°C,  
self-extinguishing in acc. to UL 94,  
creepage resistance CTI 550,  
halogen-free

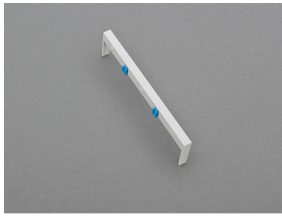
Screws: screw +/- (PZ1), galvanized, chromized

Conductor insulation: temperature-resistant up to 105 °C

### **Reference**

For compact mounting of complete motor circuits with commercially available switchgear and safe mechanical and electrical connection to the busbar system.

## Accessories



**32 912**

side-mounted module EEC-compact, mountable at both sides

Standardausführung

9 x 160