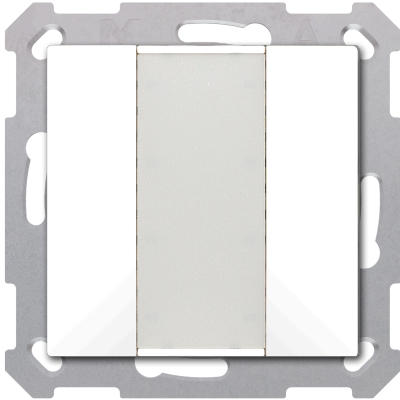


## BE-TA5502.G2

### KNX Push Button 55 2 gang, Pure White glossy finish



#### Product description:

The MDT Push-button 55 is a KNX push-button with horizontally aligned buttons, suitable for 55 mm switch ranges from various manufacturers. Inscription of the buttons to be conducted on the centered labelling foil. The buttons can be configured as single buttons or as pairs. In addition to switching, dimming, blinds or sending values, there are numerous functions to choose from. The button 55 has 4 integrated logic blocks.

#### Product functions:

- Suitable for 55 mm switch ranges e.g. MDT assortment 55, GIRA Standard 55, E2, Event, Esprit, BERKER S1, B3, B7, JUNG A 500, A PLUS, A CREATION, AS 500, A 550, A FLOW or MERTEN 1M, M-Smart, M-Plan, M-Pure
- **Centred labelling field with cover foil for individual labelling**
- The buttons can be configured as pairs or as singular buttons
- Singular and double Push-button operation for switching, dimming, shutters, values
- **Innovative group control with long/extra long button press**
- Toggle up to four values or scenes
- Short/Long button press with 2 objects
- 4 Logic blocks
- Installation in an installation box using the included installation frame
- Integrated Bus coupler
- 3 year warranty

## Technical data:

<b>Device</b>	Device type	BE Push-button
	Article Number	BE-TA5502.G2
	EAN / GTIN	4251916112318
	Colour	Pure White, glossy finish
	Dimensions (H x W x D)	55 x 55 x 13 mm
	Weight, gross (incl. packaging)	0.062 kg
	Protection classification	IP20
	Installation type	Flush mounted
	Included carrying ring	Carrying ring A
	Installation position	any
	Weight, net	0.035 kg
	<b>Operation</b>	Number of buttons
<b>KNX</b>	Nominal voltage KNX	30 V DC SELV
	Voltage range KNX	21 ... 31 V DC SELV
	Typical power consumption KNX bus	< 0,3 W
	KNX Medium	TP-256 with long frame support
	KNX Application	as of ETS 5 (latest)
<b>Environmental conditions</b>	Ambient operating temperature	0 ... 45 °C
	Storage	-20 ... +55 °C
	Humidity	< 95 %
	Condensation permissible	No
<b>Connections</b>	Temperature sensor	Without
	KNX connection type	KNX terminal
	KNX cable cross section	0.6 ... 0.8 mm, solid conductor

## Wiring diagram:

