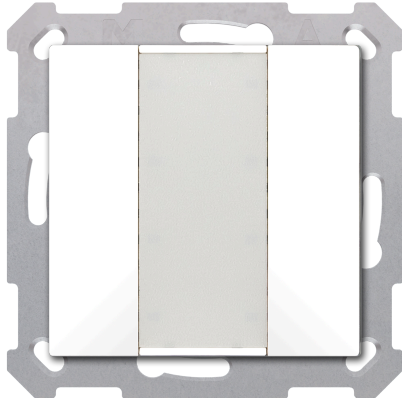


BE-TA5502.02

KNX Push Button 55 2 gang, Pure White matt finish



Product description:

The MDT Push-button 55 is a KNX push-button with horizontally aligned buttons, suitable for 55 mm switch ranges from various manufacturers. Inscription of the buttons to be conducted on the centered labelling foil. The buttons can be configured as single buttons or as pairs. In addition to switching, dimming, blinds or sending values, there are numerous functions to choose from. The button 55 has 4 integrated logic blocks.

Product functions:

- Suitable for 55 mm switch ranges e.g. MDT assortment 55, GIRA Standard 55, E2, Event, Esprit, BERKER S1, B3, B7, JUNG A 500, A PLUS, A CREATION, AS 500, A 550, A FLOW or MERTEN 1M, M-Smart, M-Plan, M-Pure
- **Centred labelling field with cover foil for individual labelling**
- The buttons can be configured as pairs or as singular buttons
- Singular and double Push-button operation for switching, dimming, shutters, values
- **Innovative group control with long/extra long button press**
- Toggle up to four values or scenes
- Short/Long button press with 2 objects
- 4 Logic blocks
- Installation in an installation box using the included installation frame
- Integrated Bus coupler
- 3 year warranty

Technical data:

Device	Device type	BE Push-button	
	Article Number	BE-TA5502.02	
	EAN / GTIN	4251916112301	
	Colour	Pure White, matt finish	
	Dimensions (H x W x D)	55 x 55 x 13 mm	
	Weight, gross (incl. packaging)	0.062 kg	
	Protection classification	IP20	
	Installation type	Flush mounted	
	Included carrying ring	Carrying ring A	
	Installation position	any	
	Weight, net	0.035 kg	
	Operation	Number of buttons	1 pair of buttons / 2 buttons
KNX	Nominal voltage KNX	30 V DC SELV	
	Voltage range KNX	21 ... 31 V DC SELV	
	Typical power consumption KNX bus	< 0,3 W	
	KNX Medium	TP-256 with long frame support	
	KNX Application	as of ETS 5 (latest)	
Environmental conditions	Ambient operating temperature	0 ... 45 °C	
	Storage	-20 ... +55 °C	
	Humidity	< 95 %	
	Condensation permissible	No	
Connections	Temperature sensor	Without	
	KNX connection type	KNX terminal	
	KNX cable cross section	0.6 ... 0.8 mm, solid conductor	

Wiring diagram:

